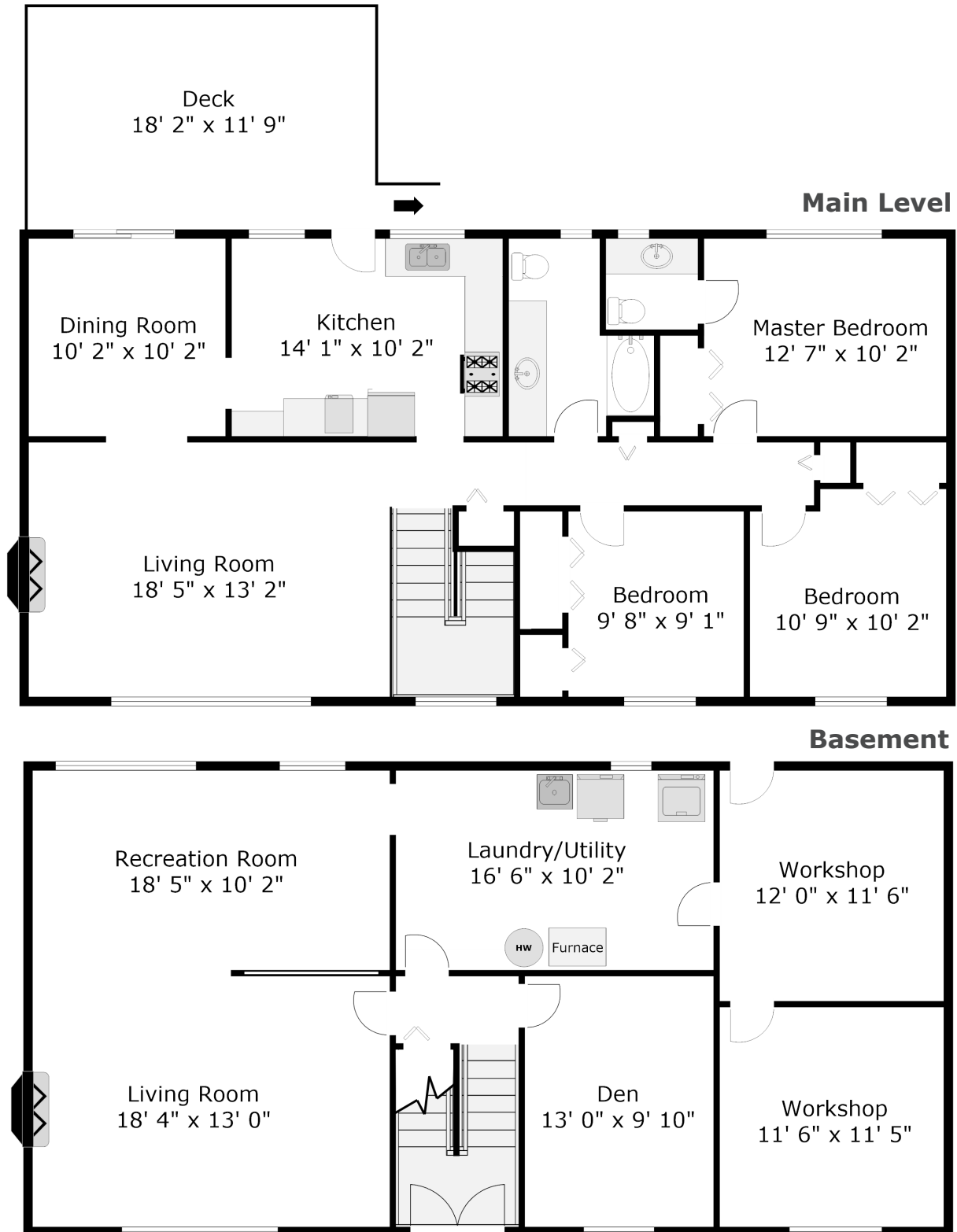


3660 Edinburgh St. Port Coquitlam, BC



Main Level 1223 sq. ft.
Basement 918 sq. ft.
FINISHED 2141 sq. ft.
Workshops 309 sq. ft.

604-767-0490



Measurements and floor plan are approximate and are to be used for advertising purposes only. Not suitable for construction or architectural use. Square footage calculated using ANSI Z765 method. May 2018.