

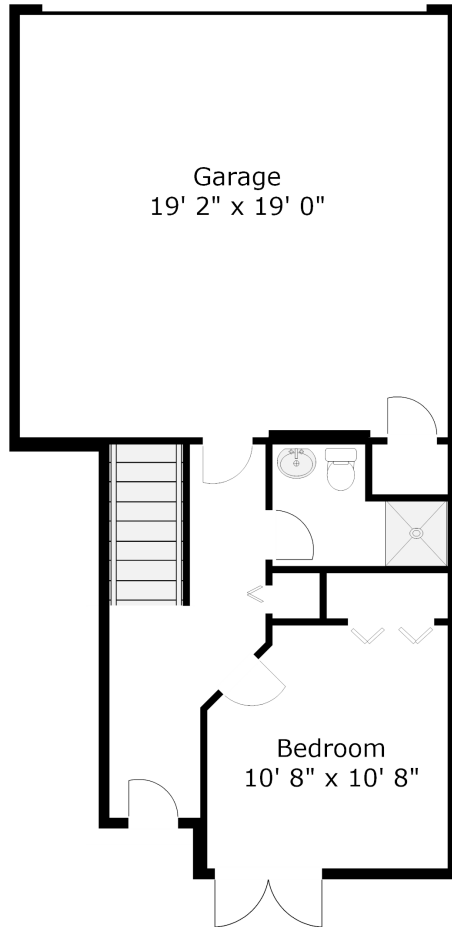
#5 2139 Prairie Ave. Port Coquitlam, BC

TOTAL 1688 sq. ft.
Garage 392 sq. ft.

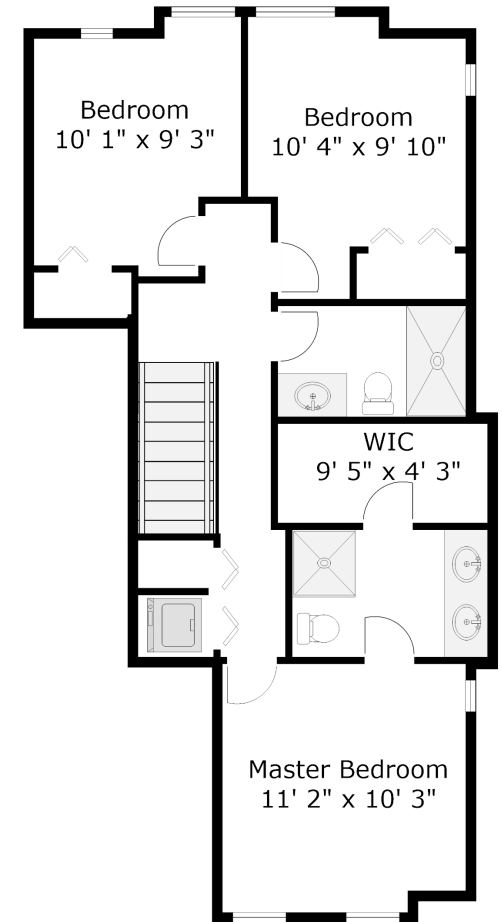
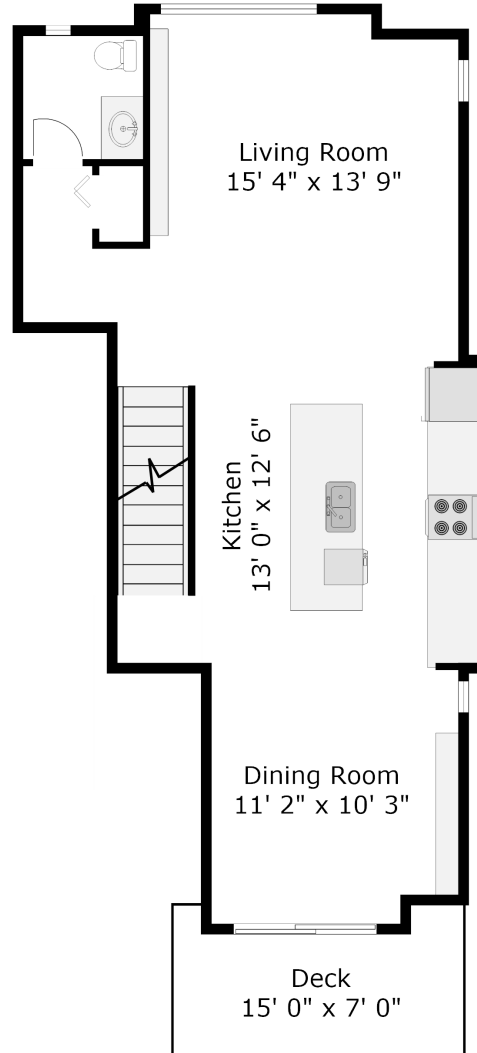


604-767-0490

Lower Level 318 sq. ft.



Main Level 688 sq. ft.



Upper Level 682 sq. ft.

Measurements and floor plan are approximate and are to be used for advertising purposes only. Not suitable for construction or architectural use. Square footage calculated using ANSI Z765 method. October 2018.