

# 3258 Cornwall St., Port Coquitlam, BC

**Finished**  
Garage

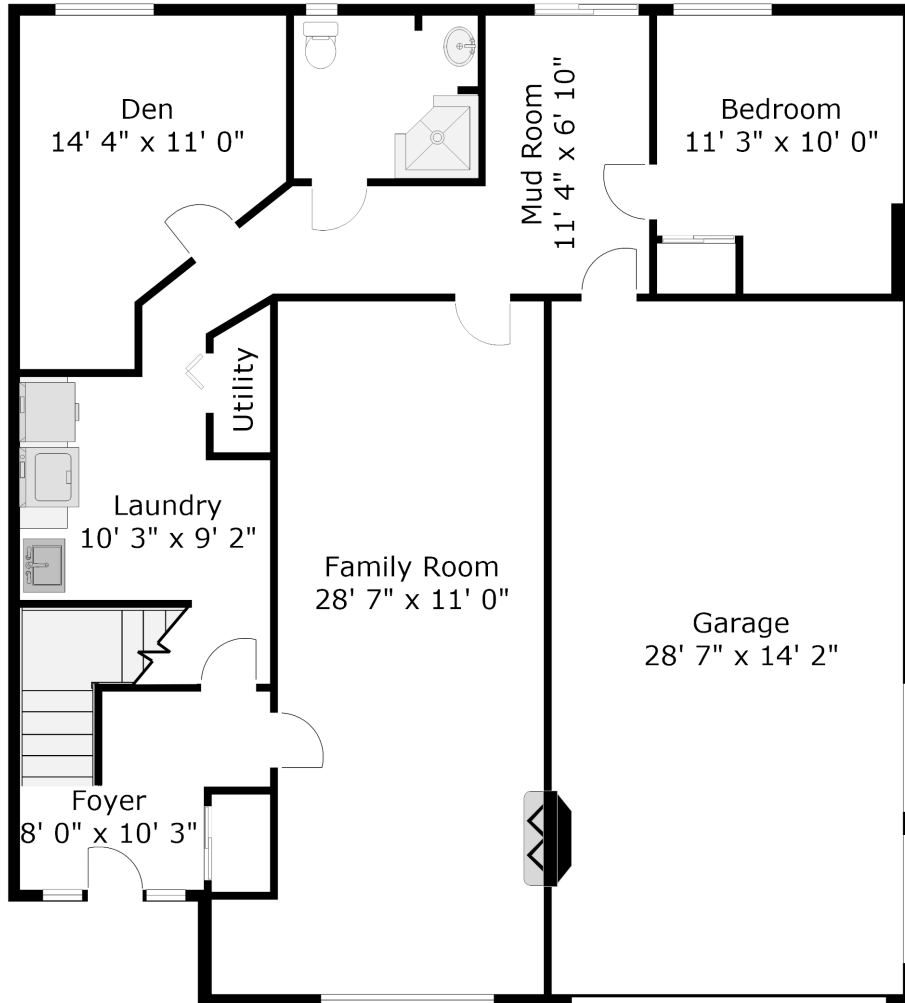
**2348 sq. ft.**  
428 sq. ft.



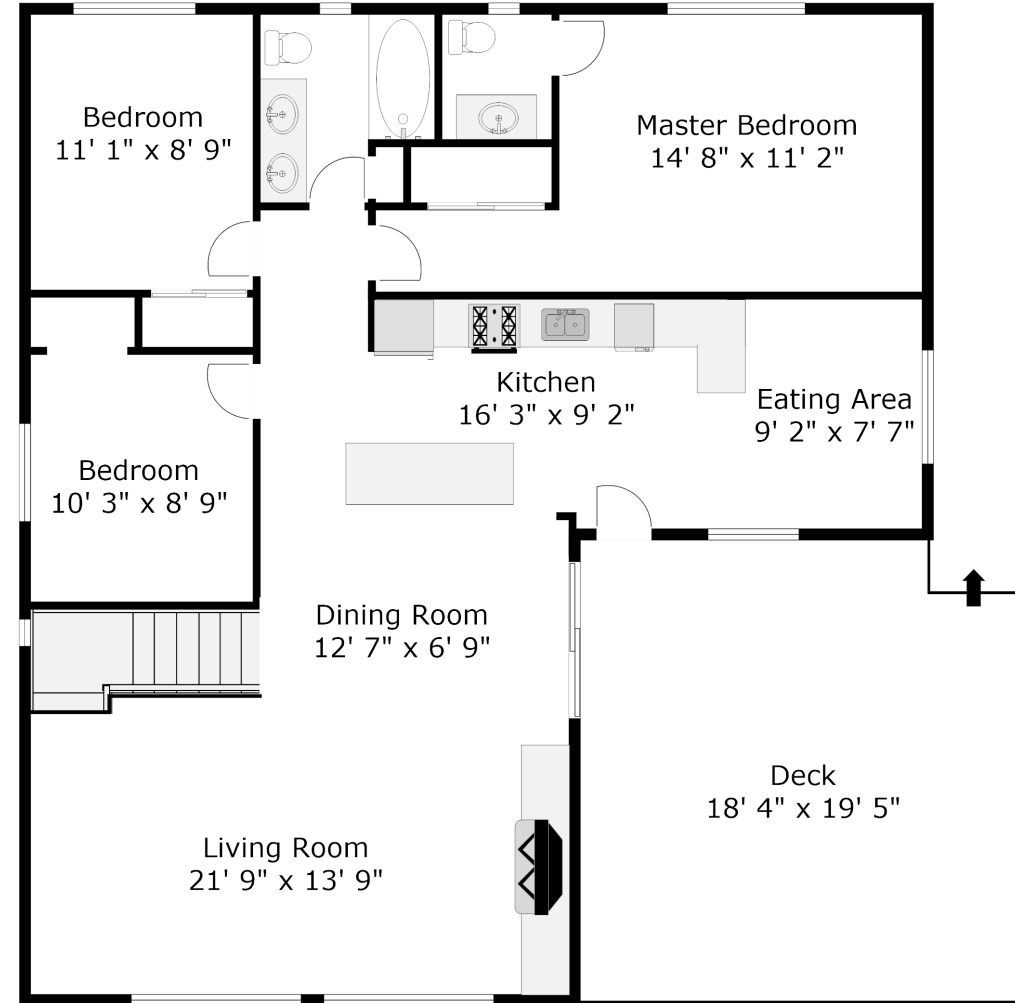
**PIETRO  
NARDONE**  
PERSONAL REAL ESTATE CORPORATION

**604-767-0490**

Lower Level  
1090 sq. ft.



Main Level  
1258 sq. ft.



*Measurements and floor plan are approximate and are to be used for advertising purposes only. Not suitable for construction or architectural use. E&O Insured. Square footage calculated using ANSI Z765 method. Measured April 2019.*