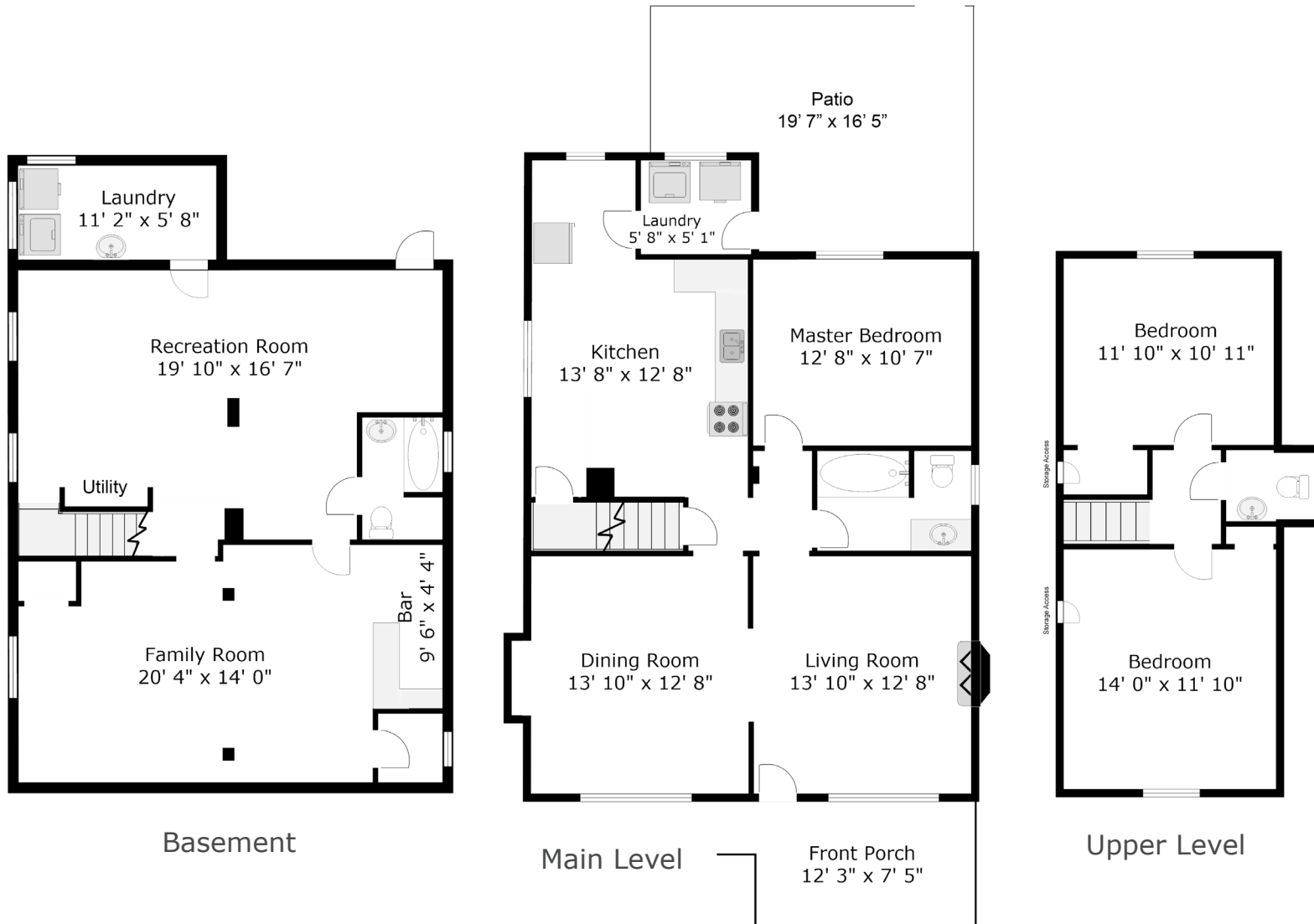


1595 Renfrew St. Vancouver, BC

Basement 945 sq. ft.
Main Level 952 sq. ft.
Upper Level 418 sq. ft.
TOTAL 2315 sq. ft.

604-767-0490



Measurements and floor plan are approximate and are to be used for advertising purposes only. Not suitable for construction or architectural use. Square footage calculated using ANSI Z765 method. April 2018.