

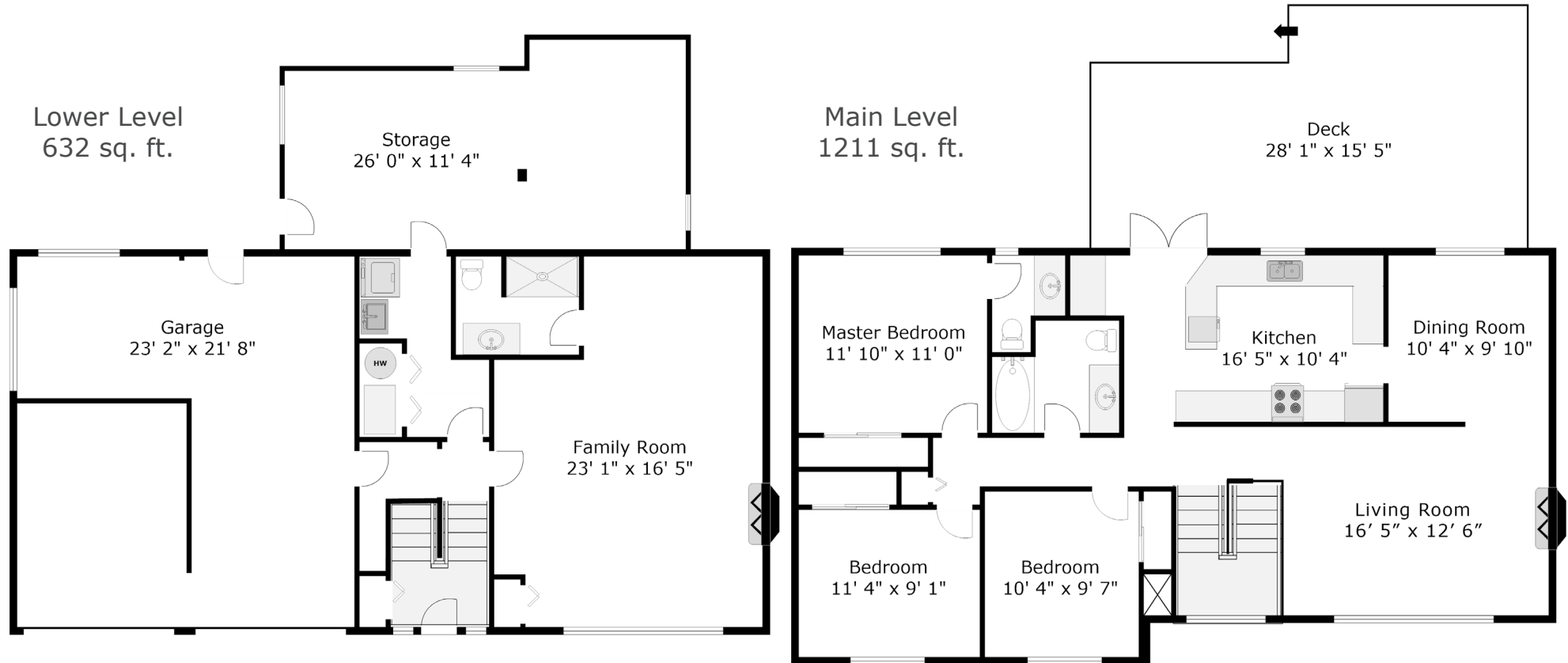
937 Osprey Place, Port Coquitlam, BC

Finished 1843 sq. ft.
Unfinished 333 sq. ft.
Garage 525 sq. ft.



**PIETRO
NARDONE**
PERSONAL REAL ESTATE CORPORATION

604-767-0490



Measurements and floor plan are approximate and are to be used for advertising purposes only. Not suitable for construction or architectural use. E&O Insured. Square footage calculated using ANSI Z765 method. Measured March 2019.