

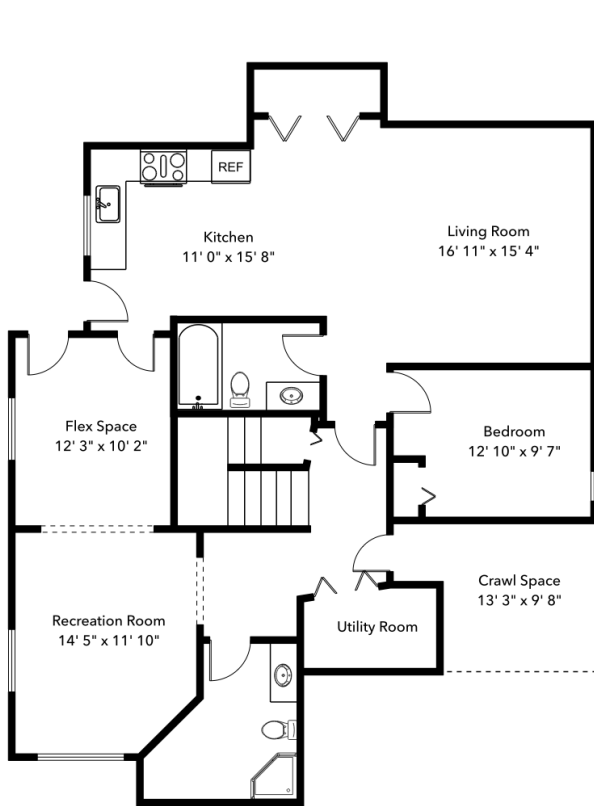
8 Wilkes Creek Dr. Port Moody, BC

Finished 4438 sq. ft.
Garage 395 sq. ft.
Crawl Space 132 sq. ft.

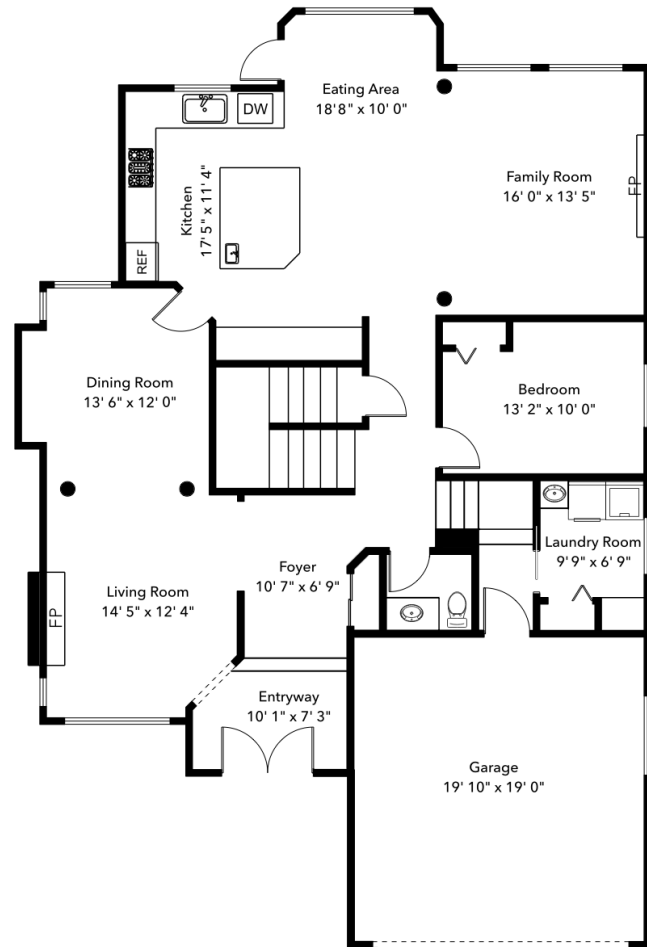


**PIETRO
NARDONE**
PERSONAL REAL ESTATE CORPORATION

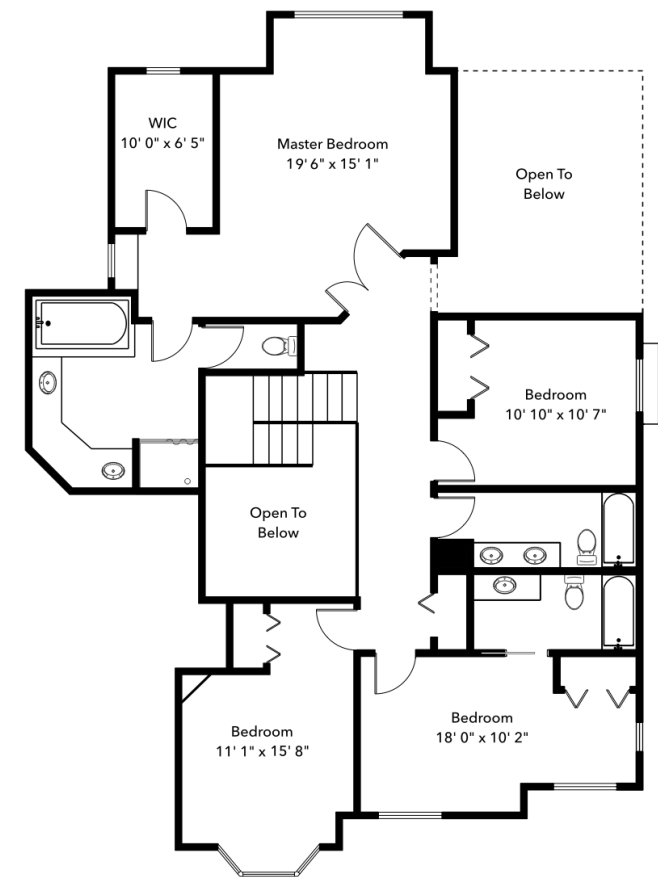
604-767-0490



Basement
1415 sq. ft.



Main Level
1602 sq. ft.



Upper Level
1421 sq. ft.